



Nr 9972-71521000

ROTATING REEL LIFT 7152

MANUAL



CONTENTS

General	3
Safety rules	4
Introduction	6
Technical data	6
Component parts	7
Operation	8
Lifting i reel	8
Rolling out cable	9
Dismantling reel lift	9
Spare parts	10
Maintance schedule	10
EU Certificate of Conformity	11



THANK YOU FOR CHOOSING A SAHLINS PRODUCT!

We want you to be satisfied with your equipment. This instruction manual has been written to help you handle it safely and care for it correctly. Please read the manual thoroughly before using the equipment so that you are aware of the safety measures you need to take when using it.

General information

During the design and manufacture of the equipment, we have taken great care to reduce health and safety risks.

Laying cables or installing ropes involves a variety of risks, and to reduce these it is important:

- to study and follow the instructions
- to train staff in maintenance and safety on an ongoing basis
- to ensure that appropriate equipment and tools are available
- that the owner and supervisor are responsible for ensuring that effective safety programmes and regulations are developed and followed by all staff

Our instructions contain important information that all users should know and understand before they use the equipment. To ensure the safety of yourself and others, you should pay particular attention to the points/sections with following headings:

WARNING!

Important information that warns you about the risk of serious personal injuries or danger of life if the instructions are not followed.

CAUTION

Important information that describes how you should prevent damage to machinery and equipment or how to avoid a situation that can cause personal injury.

NOTE

Advisory information regarding the operation, care and maintenance of machinery and equipment.

SAFETY RULES

Personnel safety

1. Read and acquaint yourself with all of the warnings, precautionary measures and instructions in the user- and service manual, and read and learn the importance of all the signs on and around the equipment. In the case of any doubt, ensure that you have answers to all your questions before beginning work.
2. Do not work with machinery or equipment if you're under the influence of alcohol, strong medications, sedatives or other drugs that can make you less alert or affect your judgement.
3. Take safety measures such as not wearing loose clothing which can get stuck in moving parts or controls.
4. If possible always wear gloves to protect your hands and fingers against cuts and abrasions, burns and solvents.
5. Always use safety goggles if there is a risk of flying particles, flakes of material, dust or other objects that can damage your eyes, or where safety regulations require this.
6. Always use a protective helmet and safety shoes during work that requires this.
7. Always use hearing protection in work areas with high noise levels.

Safety in the workplace

8. Keep the work area clean and free of material.
9. Do not permit unauthorised personnel to be present within or around the work area. Always keep complete control of who is present.
10. Areas that will be touched with hands or feet must be kept clean, dry and free of oil or grease.
11. Store spare parts and tools in the designated places when these are not in use.
12. Do not stand beneath or permit anyone else to stand beneath equipment that is lifted or suspended.
13. Acquaint yourself with the weight limitations in ropes and lifting equipment and the free space required for these.

Equipment safety.

14. Warning, prohibition and information signs may not be concealed, changed, damaged or removed.
15. Before direction of portable equipment, ensure that the ground surface is firm and flat. Check that supports and locks are securely in place. Follow the instructions for locking and erection of equipment where applicable.
16. Check the components in the equipment before each operation to ensure that no parts are damaged or are suspected to be damaged. Repair or replace damaged parts or parts which are suspected to be damaged. Repair or replace

damaged parts before starting and operating the equipment. Only use original spare parts.

17. Before starting on operating equipment, ensure that no people, animals, tools, spare parts or other foreign objects are present in, on, under or around it. Check that all protective and safety equipment is correctly installed and in satisfactory condition.

18. Do not permit untrained personnel to use any equipment without supervision by a trained operator.

19. Never leave the equipment without control and supervision.

20. Pay attention when using the equipment to visible defects or unusual noises that can indicate a fault. Immediately halt use if any fault is suspected.

21. Carry out all inspection, maintenance, lubrication and adjustment with great care and according to the manufacturer's recommendations.

22. Carry out all inspections, maintenance, lubrication and adjustments with great care, and in accordance with the manufacturer's recommendations. The machine must always be stopped during maintenance work.

INTRODUCTION

Rotating reel lift 7152 is intended for use when lifting horizontal cable reels by one central hole. As it is equipped with ball bearings, rotation is very easy.

The reel lift is available in three different sizes depending on the weight and central hole of the reel.

WARNING!

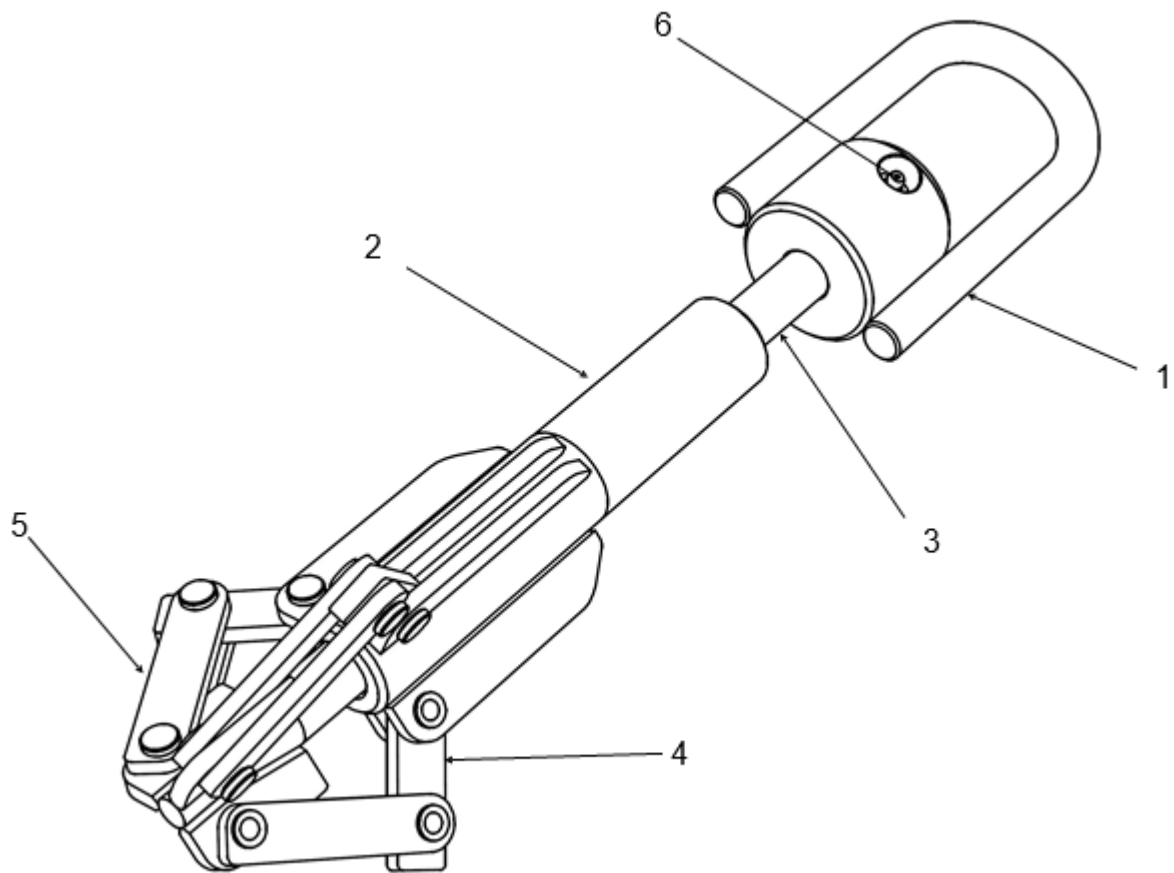
It is important to use the right sized reel lift, as otherwise there may be a risk of accidents.



TECHNICAL DATA

Rotating reel lift 7152			
Model	7152-1012	7152-1022	7152-1040
Max. reel weight	1200 kg	2200 kg	4000 kg
Central hole	Ø75 mm	Ø105 mm	Ø130 mm
Weight	3.5 kg	8 kg	20 kg
Ball bearings	X	X	X
Yellow chromated	X	X	X

COMPONENT PARTS



The reel lift contains the following parts:

- 1 Bracket
- 2 Sleeve (fluted)
- 3 Shaft
- 4 Arm
- 5 Arm
- 6 Grease nipple

OPERATION

Working with Rotating reel lift 7152

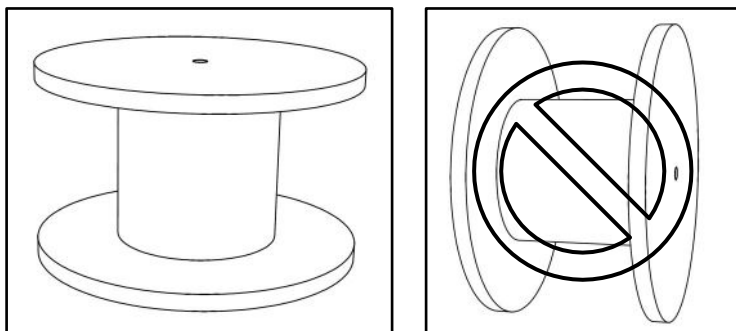
WARNING!

Check the cable reel's weight. Check that:

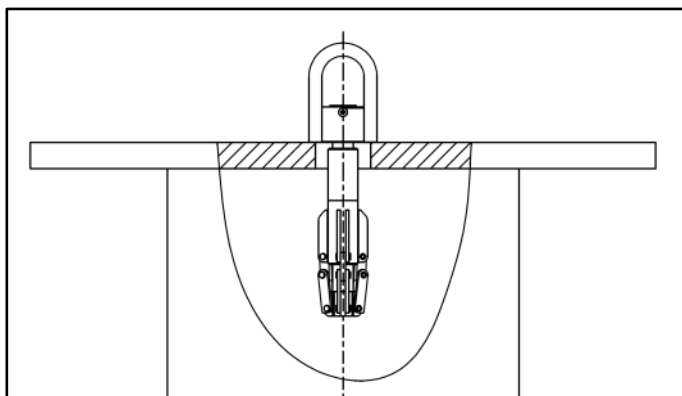
- the reel lift to be used is intended for the reel.
- all other components to be used can cope with the reel weight.
- none of the equipment is deformed or damaged in any way.
- the ball bearings and all joints run freely.

LIFTING A REEL

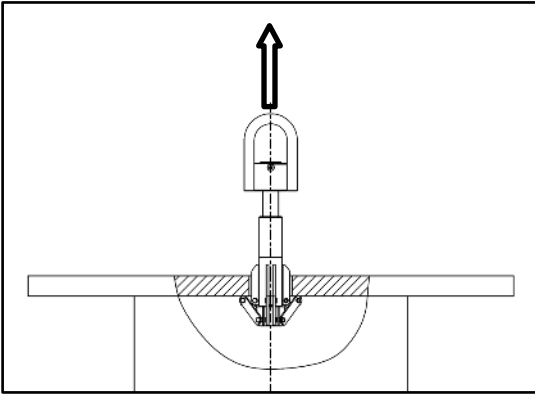
1. Place the cable reel horizontally.



2. Run the reel lift to the extended position and place it in the central hole.



3. Install the lifting equipment in the reel lift's bracket and lift. The reel lift will automatically spread and grip against the inside of the cable reel.



ROLLING OUT CABLE

WARNING!

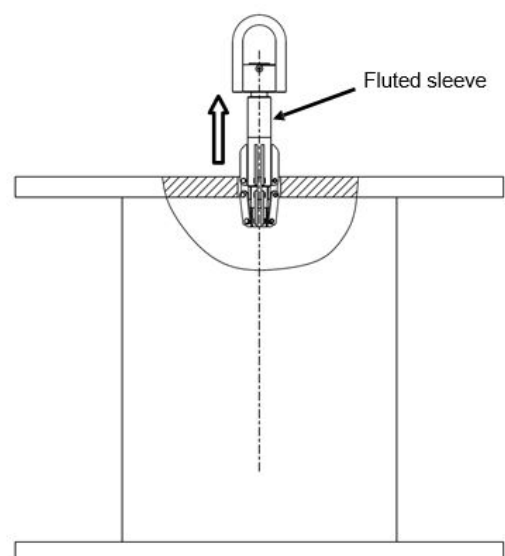
As the reel lift has ball bearings, the reel will rotate slightly when cable is being pulled off.

Make sure you respect safety distances and that the reel does not get out of control or start to sway dangerously.

To reduce these phenomena, you can attach a reel brake (item no. 7152-1000) as an accessory. This reel brake fits 7152-1012 and 7152-1022.

DISMANTLING REEL LIFT

1. When you have finished pulling off cable, place the reel on a flat surface.
2. Remove the lifting equipment from the reel lift's bracket.
3. Hold onto the fluted sleeve of the reel lift and lift straight up.
4. The reel lift will now automatically fold up and can be taken out of the central hole.



SPARE PARTS

The reel lift's component parts are permanently attached to each other. There are no loose spare parts.

MAINTENANCE SCHEDULE

	Action	Every time	Every Month or 20 hours
Damage and deformation	Inspect	X	
Ball bearings	Inspect	X	
Arm joints	Inspect	X	
Ball bearings	Lubrication		X (1)

(1)Lubrication is done via grease nipples



EU CERTIFICATE OF CONFORMITY

Vi försäkrar , i egenskap av tillverkare, att nedanstående produkt uppfyller alla tillämpliga bestämmelser i 2006/42/EG.

We declare, as a manufacturer, that the following product meets all applicable provisions of 2006/42 / EC

Artikelnummer <i>Article num-</i>	7152-1012, 7152-1022, 7152-1040
Benämning <i>Name</i>	Roterande trumlyft / Rotating Reel Lift

Tillämpade harmoniserande standarder / Applied harmonised

Andra tillämpade standarder och specifikationer / Other applied standards

Behörig att sammanställa teknisk dokumentation / Authorised to compile

Namn <i>Name</i>	Undertecknad / Signed	Adress <i>Address</i>	Enligt nedan / As
---------------------	-----------------------	--------------------------	-------------------

Ort <i>Town/City</i>	Holsljunga	Datum <i>Date</i>	2019-01-28
Namn <i>Name</i>			
Namnförtydligande <i>Name in block letters</i>	Stefan Svensson		
Befattning <i>Position</i>	VD		



 **MADE IN HOLSLJUNGA**

Sahlins Sweden AB
Företagsvägen 2
512 64 Holsljunga

+46(0)320 209 330 | sales@sahlins.com

SAHLINS.COM



2019.11

